

# \$569,900 - 1025 West Lakeview Drive, Chestermere

MLS® #A2199207

**\$569,900**

3 Bedroom, 3.00 Bathroom, 1,631 sqft  
Residential on 0.07 Acres

Chelsea\_CH, Chestermere, Alberta

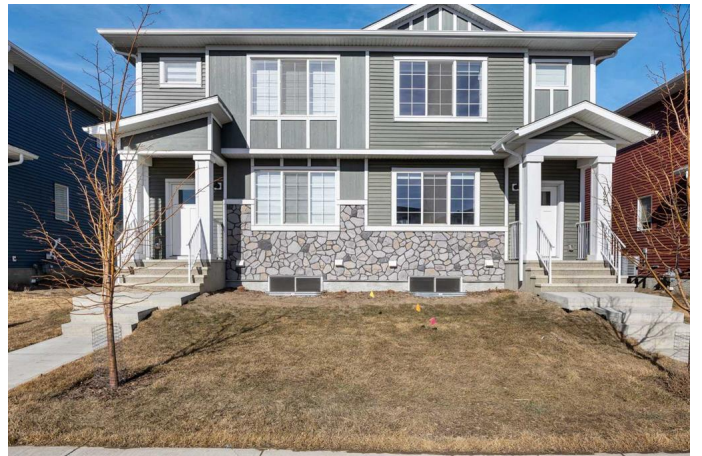
OPEN HOUSE Saturday, April 19 from  
11-1pm! PRICE IMPROVEMENT - SELLER IS  
INCLUDING SOD in backyard! Incredible  
Investment Opportunity in Chelsea,  
Chestermere!

Welcome to this exceptional investment  
opportunityâ€”purchase one unit or buy both  
(next door is available for purchase) for  
maximum potential! Live in one side and rent  
out the other, or add basement suites to create  
up to four income-generating doors.

This brand-new 2024-built duplex features 3  
bedrooms + bonus room, 2.5 bathrooms, and  
is located in the new and growing community  
of Chelsea in Chestermere.

Step inside to a modern kitchen, perfect for  
cooking and entertaining, complete with a  
oversized island, sleek quartz countertops,  
and stylish cabinetry. Upstairs, the spacious  
primary bedroom boasts a private ensuite,  
while two additional bedrooms, a full bath, and  
a bonus room with upstairs laundry provide  
comfort and convenience for the family.

The unfinished basement with a separate side  
entrance offers incredible potential for future  
developmentâ€”whether for additional living  
space or a rental suite (subject to approval  
and permitting by the city). Plus, the poured  
parking pad is already in place for a future  
garage, making this home a fantastic



investment.

Prime location: Just minutes from Chestermere Lake, 3 minutes to Costco, Homesense, Starbucks and more , and 20 minutes to downtown Calgary, this family-friendly neighborhood offers breathtaking mountain views when you look to the right of your front door.

Don't miss this incredible opportunityâ€”whether you're an investor or a future homeowner, this property is a smart buy!

Contact us today for more details or to schedule a viewing!

Built in 2024

### Essential Information

MLS® #	A2199207
Price	\$569,900
Bedrooms	3
Bathrooms	3.00
Full Baths	2
Half Baths	1
Square Footage	1,631
Acres	0.07
Year Built	2024
Type	Residential
Sub-Type	Semi Detached
Style	2 Storey, Side by Side
Status	Active

### Community Information

Address	1025 West Lakeview Drive
Subdivision	Chelsea_CH
City	Chestermere
County	Chestermere

Province Alberta  
Postal Code T1X 2T2

### Amenities

Parking Spaces 2  
Parking Parking Pad

### Interior

Interior Features Quartz Counters, Walk-In Closet(s)  
Appliances Dishwasher, Electric Stove, Microwave Hood Fan, Refrigerator, Washer/Dryer  
Heating Forced Air  
Cooling None  
Has Basement Yes  
Basement Unfinished, See Remarks

### Exterior

Exterior Features Other, Private Yard  
Lot Description Back Lane, Back Yard, Front Yard  
Roof Asphalt Shingle  
Construction Stone, Vinyl Siding  
Foundation Poured Concrete

### Additional Information

Date Listed March 5th, 2025  
Days on Market 44  
Zoning R-3

### Listing Details

Listing Office The Real Estate District

Data is supplied by Pillar 9â„¢ MLSÂ® System. Pillar 9â„¢ is the owner of the copyright in its MLSÂ® System. Data is deemed reliable but is not guaranteed accurate by Pillar 9â„¢. The trademarks MLSÂ®, Multiple Listing ServiceÂ® and the associated logos are owned by The Canadian Real Estate Association (CREA) and identify the quality of services provided by real estate professionals who are members of CREA. Used under license.