

\$874,700 - 140 Creekstone Landing Sw, Calgary

MLS® #A2202445

\$874,700

4 Bedroom, 3.00 Bathroom, 2,731 sqft
Residential on 0.08 Acres

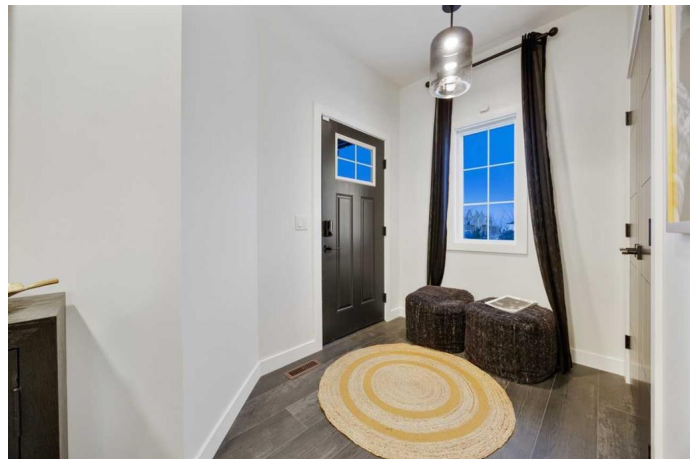
Pine Creek, Calgary, Alberta

Introducing The Bennett 2 â€” a luxurious 3-storey home. The executive kitchen features built-in stainless steel appliances, pots and pans drawers below the gas cooktop, and a waterfall edge at the island. The home includes and a side entrance leading to a 2-bedroom rough-in, and the main floor includes a bedroom with a full bathroom, Upstairs, enjoy a 5-piece ensuite with dual sinks, a soaker tub, and a walk-in shower. The third floor offers a private balcony. Extra windows flood the home with natural light, while modern finishes like the electric fireplace with tile-to-ceiling add warmth and style. The east-facing backyard completes this beautiful home! Photos are representative.

Built in 2024

Essential Information

MLS® #	A2202445
Price	\$874,700
Bedrooms	4
Bathrooms	3.00
Full Baths	3
Square Footage	2,731
Acres	0.08
Year Built	2024
Type	Residential
Sub-Type	Detached
Style	2 Storey



Status Active

Community Information

Address 140 Creekstone Landing Sw
Subdivision Pine Creek
City Calgary
County Calgary
Province Alberta
Postal Code T2X5E7

Amenities

Parking Spaces 4
Parking Double Garage Attached
of Garages 2

Interior

Interior Features Double Vanity, Kitchen Island, Open Floorplan, Pantry, Separate Entrance, Smart Home, Tankless Hot Water, Vaulted Ceiling(s), Walk-In Closet(s), Solar Tube(s)
Appliances Built-In Oven, Dishwasher, Gas Cooktop, Microwave, Range Hood, Refrigerator, Tankless Water Heater
Heating Forced Air, Natural Gas
Cooling None
Fireplace Yes
of Fireplaces 1
Fireplaces Decorative, Electric
Has Basement Yes
Basement Full, Unfinished

Exterior

Exterior Features Balcony
Lot Description Back Yard
Roof Asphalt Shingle
Construction Stone, Vinyl Siding, Wood Frame
Foundation Poured Concrete

Additional Information

Date Listed March 18th, 2025
Days on Market 31
Zoning R-G

Listing Details

Listing Office Bode Platform Inc.

Data is supplied by Pillar 9â,,ç MLSÂ® System. Pillar 9â,,ç is the owner of the copyright in its MLSÂ® System. Data is deemed reliable but is not guaranteed accurate by Pillar 9â,,ç. The trademarks MLSÂ®, Multiple Listing ServiceÂ® and the associated logos are owned by The Canadian Real Estate Association (CREA) and identify the quality of services provided by real estate professionals who are members of CREA. Used under license.